

Dear Parents and Carers,

We are currently hosting a fabulous course entitled 'The Incredible Years' to support parents with children aged 6-10 years Tuesdays 9.30am -12.15am (9.45am start) January 23rd -May 14th 2024 (14 weeks with breaks for school holidays).

They help parents to:

- Develop parenting skills and knowledge
- Improve relationships and communication with their children, through quality time, child directed activities, praise and rewards
- Understand more about child development
- Understand challenging behaviour and set appropriate limits
- Meet other parents, share skills and ideas and build friendships.

It's a great offer so if your interested please see the flyer attached.

This week we will have a real push on ensuring the park is safe for all by stopping all vehicles that don't have express permission from myself to be on site. There are approximately 10 families who have such permission—by the end of the week they will be displaying a badge that shows they can drive onto site. Please don't be upset if you are asked to leave but apart from families with children with profound SEND or parents with health issues there are no exceptions.

Shajia re-issued the termly calendar as there was an error on the spring half term return date, apologies for this error but I am re-attaching this here to ensure families have all received this update.

A final reminder that our Parent Conferences are:

- Tues 12th March 2:30—5:18 p.m.
- Wed 13th March 3:30—7:18 p.m.

So please keep these dates free!

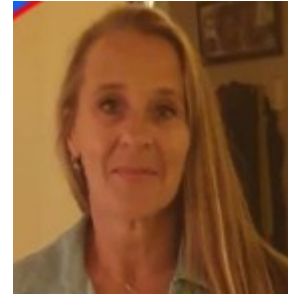
Best wishes,

Anthony

# ASHMOUNT PRIMARY SCHOOL WEEKLY NEWSLETTER

Friday 26th January 2024

## Annabel's Inclusion Corner



### BEYOND AUTISM RESOURCE HUB

This is a centralised resource where parents/carers and professionals can access a wide range of information, tools, and support related to understanding and supporting autistic individuals. <https://www.beyondautism.org.uk/resource-hub/>

This includes theme such as:

- Common challenges ( toileting, sleep etc)
- From diagnosis to support
- Health and Wellbeing ( personal hygiene, puberty and mental health)
- Sensory and Physical
- Social interaction and communication

### Bright Start Islington and The Power of Play

Why is play important?

Play is crucial for building language and is linked to the development of a range of other skills including problem solving and physical development. When you help your child learn to play, you increase their opportunities to learn about the world around them, help them discover how much fun it is to play and interact with other people and also to learn new words!

Please see the attached flyer for more information and resources to support you and your children.

### OT clinic offer

As of January 2024, Occupational Therapy Service who previously only prioritised EHC children in EYFS and KSI will now be opening the offer up to any primary age group with OT needs stipulated on their EHCP.

### Best Lining Up Award

A massive congratulations to IB & 6B for being this week's winners!



Weekly Attendance 22.01.01.24 — 26.01.24

Class	Percentage
Nursery	94.4
Reception Blue	86.2
Reception Green	88.0
1 Blue	89.3
1 Green	88.1
2 Blue	92.7
2 Green	88.7
3 Blue	91.1
3 Green	90.7
4 Blue	92.8
4 Green	90.8
5 Blue	99.2
5 Green	96.8
6 Blue	89.6
6 Green	94.0

Our best attending classes this term were:

Nursery, 2 Blue, 4 Blue and 5 Blue

Well done children and adults. These classes will on receive an additional 5 minutes play to recognise their great attendance. At Ashmount, we are aiming for at least 97% attendance in each class. Attendance for all pupils is a huge focus with the mantra being:

"Every minute matters , Every second counts"

If you need support with attendance contact Peter, our School Home Support lead, or Katie and Shajia at the school office.

### Times Tables Rock Stars

Congratulations to this week's current league table leaders in each year group! In line with our Growth Mindset philosophy, this charts the biggest improvement in correct scores over the last seven days.

The top 3 most improved children for each year group this week are:

Here are the most improved for each year group:

Here are the most improved for each year group:

Year 3: Lily, Abdur-Rahman, Nova

Year 4: Muaz, Noor, Elicia

Year 5: Rayyan, Tamana, Amelia

Year 6: Angelina, Evelyn, Amelie



# ASHMOUNT PRIMARY SCHOOL WEEKLY NEWSLETTER

Friday 26th January 2024

## What we are learning next week:

### Nursery

**English:** We will be continuing to explore 'Goldilocks and The Three Bears.

**Maths:** We will be comparing numbers up to 5.

### Reception

**English:** We will be continuing to explore 'The Jolly Postman'.

**Maths:** We will be learning about addition to 10.

### Year 1

**English:** We will continue reading the story 'Rabbit & Bear: Rabbit's bad habits' by Julian Cough & Jim Field and creating fact files.

**Maths:** We will be learning to count, write and use numbers up to 40.

### Year 2

**English:** We will be creating and publishing our own storybook based 'A Mouse Called Julian' by Joe Todd Stanton.

**Maths:** We will be solving word problems involving mass and reading temperature in Celsius.

### Year 3

**English:** We will be writing a newspaper report based on our reading of The Day The Crayons Quit.

**Maths:** We will be measuring in litres and millilitres.

### Year 4:

**English:** We will be reading and exploring stories from 'The Lion and The Unicorn and Other Hairy Tales'

**Maths:** We will be exploring time.

### Year 5

**English:** We will be learning to write a play script.

**Maths:** We will be learning to order, add and subtract decimals.

### Year 6

**English:** We will be writing a newspaper article about the Suffragettes most famous protests.

**Maths:** We will be continuing to explore percentages and will be moving on to ratio.

## School Diary Dates

*Full school term dates are on our website.*

### Educational Visits and Workshops

Tues 6th Feb—SEA Life Aquarium—Year 4

Wed 28th February—London Zoo—Year 3

### Class Assemblies

Tues 30th Jan—5 Blue

Tues 6th Feb 6 Green

Tues 27th Feb—Reception Blue

Tues 5th March 1 Green

Tues 12th March—22 Blue

Tues 19th March Reception Green

Tues 26th—1 Blue

### Whole School/Ashmount Together Events

Year 1 Curriculum meeting Tues 23rd Jan 9 a.m.

Bring An Adult To School Day Friday 8th Mar 9 a.m.

### Parent Conferences

Tues 12th March 2:30—5:18 p.m.

Wed 13th March 3:30—7:18 p.m.

### Tuck shop dates

Friday 2nd February - Year 1

Friday 9th February- Year 5

Friday 16th February- Half Term

Friday 23rd February - Year 6

Friday 1st March - Reception & Nursery

Friday 8th March - Year 3

### Term Dates

End of half term: Friday 9th February

Start of second half of spring term: Tuesday 20th February

End of term: Thursday 28th March School finishes at 1:30 p.m.



Friday 26th January 2024

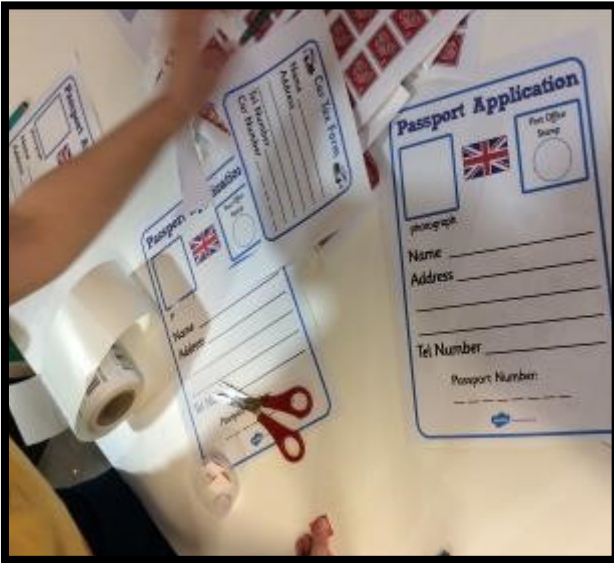
## Our learning in pictures: Nursery



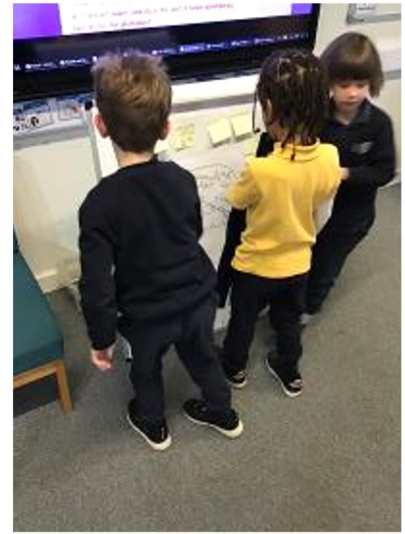


Friday 26th January 2024

## Our learning in pictures: Reception



### Our learning in pictures: Year 1



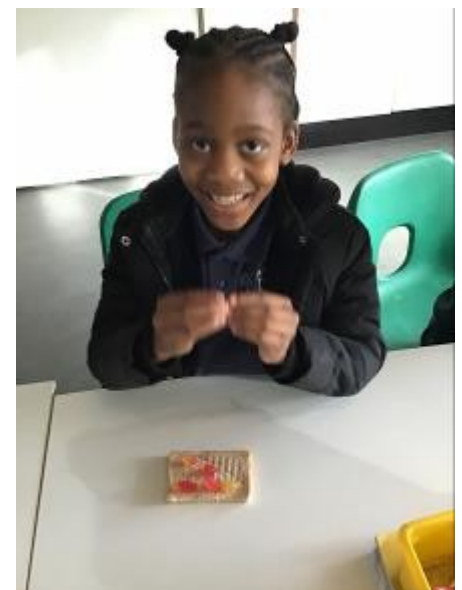


### Our learning in pictures: Year 2





### Our learning in pictures: Year 3



### Our learning in pictures Year 4





Friday 26th January 2024

## Our learning in pictures Year 5





### Our learning in pictures Year 6

