

Friday 10th November 2023

Dear Parents and Carers,

Firstly, thank you to all of those who have already let us know their thoughts on our two current live parent consultations. But we would really like to get up to 200 family responses on each survey—we are up to 124 on our Annual Parent Survey and 97 in our Dual Meat School Meal offer. The outcomes for both consultations will go to the Governing Board's Children, Families and Communities Committee and with this in mind we will keep both surveys open until, Monday at midnight. Please consider taking the 5 minutes in total it would need to complete both surveys so we can accurately respond to the widest number of families from our community. Please see the details for both below:

The Annual Parent Survey will now run until Monday 13th November at midnight and we will publish outcomes in the school newsletter on Friday 8th December. You can submit one survey per child or one for a family—the choice is yours.

Here is the link:

<https://www.surveymonkey.co.uk/r/ASH2324> Or, use this QR code:



The Dual Meal Parent Consultation will also run until Monday 13th November at midnight. I am also attaching a pdf of the PowerPoint I used which explains the proposal and a link to the video of the first information meeting yesterday: <https://youtu.be/OZUjiKBQ8cA>

Here is the link to the survey:

<https://www.surveymonkey.co.uk/r/APSSMC23>

Here is the QR code:



Finally, I have published, on the School Diary Dates, page 4, the date and time for school closing at the end of term. We finish on Thursday 21st December at 1:30 p.m.

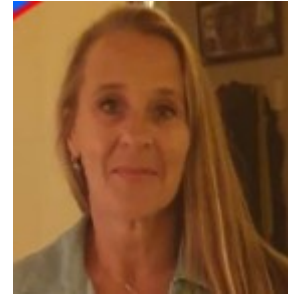
Best wishes,

Anthony

# ASHMOUNT PRIMARY SCHOOL WEEKLY NEWSLETTER

Friday 10th November 2023

## Annabel's Inclusion Corner



### Tiny Happy People



Tiny Happy People can help you develop your child's language and communication skills, so they get the best start in life.

Tiny Happy People will show you why and how you can bond with your child, before they're born and throughout their early lives – it's never too early to start.

Their ideas and activities are easy to build into your daily routine. They're quick and inspiring, but they're also based on expert advice and evidence, and are proven to help your child's development.

Please follow the link for more information:

<https://www.bbc.co.uk/tiny-happy-people>

### Sensory Differences in Children

What do sensory differences look like in children?



Children with low sensory thresholds present as being 'over-responsive' to sensory input. They can be easily overwhelmed in noisy, busy environments such as shops, birthday parties or noisy classrooms. They may not be able to tolerate labels in clothes or their hair being brushed. Children with high sensory thresholds present as 'under-responsive' to sensory input. They need a higher intensity or frequency of sensory input before they notice it. Follow this link for more information and advice: <https://www.whittington.nhs.uk/default.asp?c=43919>

### Family Hub Fun Day

Family Hub Fun Day is for Islington children and young people. They will be celebrating the launch of Family Hub South at Bemerton Children's Centre this Saturday 4<sup>th</sup> November 11.30 -2.30. (see attached flyer).

Family Hubs offer: help and support to families from pregnancy up until age 19, or up to 25 for young people with special educational needs and disabilities (SEND)

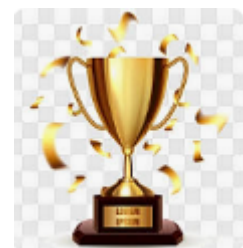
Important Start for Life services – covering the critical 1,001 days from conception to age two – at their core.

Family Hubs are a welcoming and inclusive way into services. Whatever you need support with, everything you need is in one place.

### Best Lining Up Award

Each week classes in KS1 and 2 are awarded with a certificate and cup to acknowledge their efforts for lining up quickly, sensibly and safely.

This week's winners are KS1 - 2G and in KS2- 4G again so well done!!



Weekly Attendance 06.11.23 — 10.11.23

Class	Percentage
Nursery	93.8
Reception Blue	92.3
Reception Green	91.3
1 Blue	94.8
1 Green	79.3
2 Blue	91.3
2 Green	92.4
3 Blue	97.7
3 Green	98.9
4 Blue	94.4
4 Green	97.7
5 Blue	94.8
5 Green	91.4
6 Blue	90.0
6 Green	92.7

Our best attending classes this week were:

Reception Green, 2 Green, 4 Green and 5 Green

Well done children and adults. These classes will on receive an additional 5 minutes playtime one day next week. At Ashmount, we are aiming for at least 97% attendance in each class. Attendance for all pupils is a huge focus with the mantra being:

"Every minute matters , Every second counts"

If you need support with attendance contact Peter, our School Home Support lead, or Katie and Shajia at the school office.

### Times Tables Rock Stars

Congratulations to this week's current league table leaders in each year group! In line with our Growth Mindset philosophy, this charts the biggest improvement in correct scores over the last seven days.

The top 3 most improved children for each year group this week are:

Here are the most improved for each year group:

Here are the most improved for each year group:

Year 3: Yusuf, Misra, Derin

Year 4: Joss, Maggie, Noor

Year 5: Kumsal, Kaius, Meriem

Year 6: Stanley, Nyah, Amelie



# ASHMOUNT PRIMARY SCHOOL WEEKLY NEWSLETTER

Friday 10th November 2023

## What we are learning next week:

### Nursery

**English:** We will be exploring our new text 'Mixed' by Arree Chung.

**Maths:** We will be continuing to compare numbers 1-3.

### Reception

**English:** We will be exploring our new text 'Billy and the Beast'.

**Maths:** We will be exploring time.

### Year 1

**English:** We will be learning about non-fiction texts to help us create a lost poster.

**Maths:** We will be learning to count, write and compare numbers up to 20.

### Year 2

**Maths:** We will be exploring our 2, 5 and 10 times tables.

**English:** We will be doing descriptive writing based on Prita goes to India by Prodepta Das.

### Year 3

**English:** We will be writing a newspaper report based on the events in 'I Was a Rat' by Philip Pullman.

**Maths:** We will be dividing numbers by 3, 4 and 8.

### Year 4:

**English:** We will be planning and writing stories about the girl from 'The Red Tree'.

**Maths:** We will be multiplying three numbers together, multiplying numbers by 10 and 100 and multiplying numbers up to three digits.

### Year 5

**English:** We will be learning to write a narrative from a character's perspective.

**Maths:** We will be learning to divide by 10, 100, 1000.

### Year 6:

**English:** We will be writing speeches in character as Dooby from *Floodland*.

**Maths:** We will be consolidating our understanding of our fractions unit.

## School Diary Dates

*Full school term dates are on our website.*

## Educational Visits and Workshops

Tues 14th Nov—Year 2, 3 & 4 Diwali Dance Workshops

Weds 29th November—Year 6 visit to the Natural History Museum.

Wed 6th (5G) & Thur 7th (5B) Dec—Year 5  
Creekside River Exploration

## Class Assemblies

Tues 14th Nov 2 Green

Tues 21st Nov 3 Blue

Tues 28th Nov 5 Green

Tues 5th Dec 4 Blue

## Whole School/Ashmount Together Events

Christmas Carols—Monday 18th Dec 3:45 p.m.—  
Main hall

## Tuck shop dates

Friday 24th November - Winter theme - N—Y 2 led  
And Friday 15th December - Christmas theme - Y  
3—Y 4 led

Term Dates:

End of term:

Thursday 21st Dec School finishes at 1:30 p.m.



### Our learning in pictures: Nursery



Friday 10th November 2023

## Our learning in pictures: Reception





### Our learning in pictures: Year 1





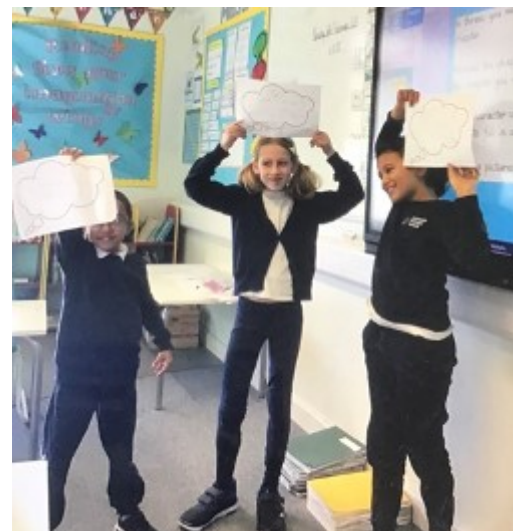
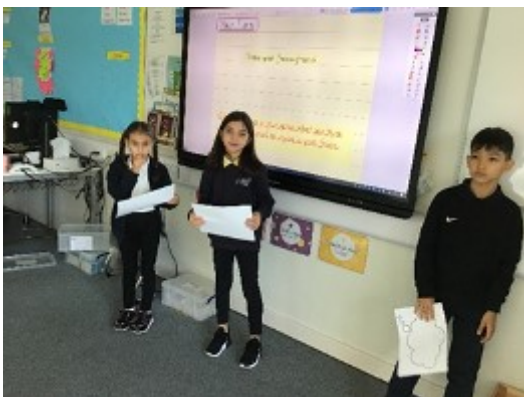
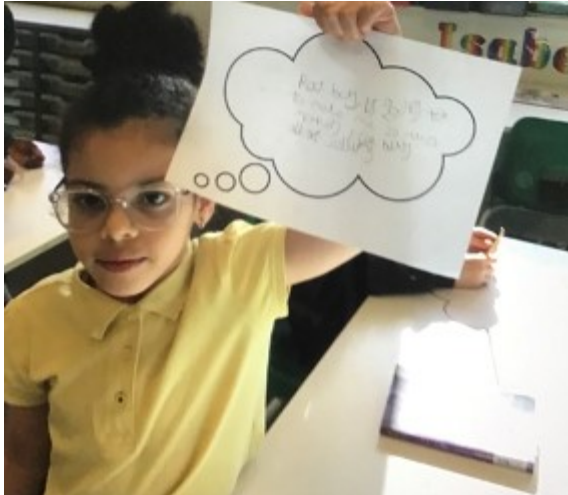
Friday 10th November 2023

## Our learning in pictures: Year 2





### Our learning in pictures: Year 3





### Our learning in pictures Year 4





### Our learning in pictures Year 5



### Our learning in pictures Year 6

