

Dear Parents and Carers,,

As you know the school had its latest full Section 5 2-day Ofsted inspection last week and I wanted to pass on both my own and the leadership teams thanks for the support of the incredibly positive whole school community support of the school during this process. The reporting process for the outcome of any school's inspection is a relatively long one as the report has several validating processes it must go through before becoming publicly available. As such the school will be unable to talk about the outcomes for what may be a period of 7 weeks. I hope that the process will be shorter but we will have to wait and see!

Next week is the school's Art week and Rosie has been busy preparing for this and discussing with the child led Arts Council what media they would like to use during the week and also planning the Monday assembly launch for the week. There will be a display of all of the children's working in the small hall after school on Friday and we would be delighted to welcome you to see the children's learning. The exhibition will be open from 3:30 p.m. until 4:30 p.m. and all families are welcome to attend.

A few reminders for the end of half term:

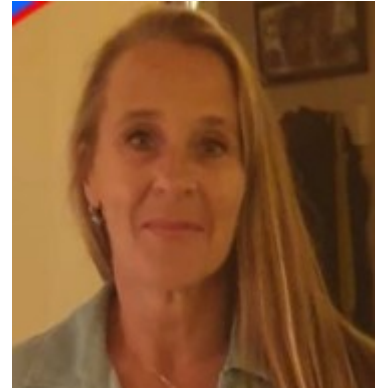
- Please collect any forgotten items of school uniform from the patio area outside the hall in the lower playground
- Remember that the park is a car free site—so unless you have express permission do not drive to school to collect or drop off your children
- We can only allow leave from school for exceptional reasons and as importantly, as with all school staff, there are 13 weeks of the school year when families can take holidays.

Finally, a reminder that there are half term play offers at St.Mary's, Brickworks, The Sunshine Club and a stay and play offer at the Cape over half term.

Best wishes,

Anthony

Annabel's Inclusion Corner



St Mary's Playscheme

They still have places available for this May's playscheme for 6 -12 year olds. St. Mary's Church, Community Centre, Upper Street, London N1 2TX/ (Please see flyer attached to the email).

You can book via their website <https://www.stmaryislington.org/>

Your child will need to bring a packed lunch and a bottle of water.

School Nurse Wellbeing Clinic

School nursing team is planning a wellbeing clinic in school on Thursday 25 /05/23 at 09:00 am. Please come to the main office.

Islington Hardship Fund

The Islington Hardship Fund is designed to help people who are working and need help to pay their rent and are not currently getting Housing Benefit or Universal Credit. Funding for this scheme is limited, so there will be only one award per household. Awards will go to those who meet the eligibility criteria on a first come, first served basis. Please click link to apply <https://www.islington.gov.uk/benefits-and-support/cost-of-living-support/hardship-fund>

Manners Curriculum

We will again this week continue to focus on 'How to politely and silently form a line/queue.' It will be reviewed in Monday's assembly.

Key points for this are:

Lining up one behind the other in your line order at all times.

Say excuse me if there is not enough space or someone is in your space.

Use non-verbal signals where possible if you need someone to move so you can get into your line space.



Join us at our art exhibition to celebrate this
year's Arts Week theme:

Ourselfes
OUR WORLD
OUR FUTURE

FRIDAY 26TH MAY

3.30PM – 4.30PM

ASHMOUNT SMALL HALL

Work will be on display from all children in the
school, exploring their identity in either paint,
pencil, clay or mixed media.

MAKE-DO PLAY

FREE child-led outdoor play sessions

Tollyrise Happiness Garden, St Mary's Hornsey Rise, N19 3AD

For all ages:

Every other Thursday
(starting 30th March)
Drop-in 10.30-1.30



For newborns:

Drop-in 10.30-12.00
17th April, 15th May
19th June, 17th July
14th Aug, 18th Sept



Maggie Eye Photography

*Cripplegate
Foundation*



ISLINGTON



@make_do_play

Friday 19th May 2023

Weekly Attendance 15.05.23 — 19.05.23

Class	Percentage
Nursery	90.9
Reception Blue	98.2
Reception Green	93.7
1 Blue	96.3
1 Green	99.7
2 Blue	98.2
2 Green	98.5
3 Blue	98.6
3 Green	98.0
4 Blue	94.6
4 Green	96.9
5 Blue	95.9
5 Green	100
6 Blue	94.4
6 Green	97.9

Our best attending classes this week were:

Reception Blue, 2 Blue, 3Green and 5 Green

Well done children and adults. These classes will on receive an additional 5 minutes playtime one day next week. At Ashmount, we are aiming for at least 97% attendance in each class. Attendance for all pupils is a huge focus with the mantra being:

"Every minute matters , Every second counts"

If you need support with attendance contact Peter, our School Home Support lead, or Katie and Shajia at the school office.

Times Tables Rock Stars

Congratulations to this week's current league table leaders in each year group! In line with our Growth Mind-set philosophy, this charts the biggest improvement in correct scores over the last seven days.

The top 3 most improved children for each year group this week are:

Here are the most improved for each year group:

Y3: Dexter, Remel, Selena

Y4: Grace, Ebrahim, Noah

Y5: Amelie, Angelina, Christian

Y6: Jacob, Georgie, Foster



CONGRATULATIONS!

ASHMOUNT PRIMARY SCHOOL WEEKLY NEWSLETTER

Friday 19th May 2023

What we are learning next week:

Nursery

English: We will be continuing to explore the story 'Rosie's Walk'.

Maths: We will be continuing to develop our understanding of positional language.

Reception

English: We will be continuing to explore 'The Snail & The Whale'.

Maths: We will be using rekenreks to show more and fewer.

Year 1

English: We will be learning about how to save the planet.

Math: We will be learning about time and money.

Year 2

English: We will be writing and publishing our travel brochure about London.

Maths: We will be finding ending, starting times and comparing time

Year 3

English: We will be planning, writing and publishing in role as Iris from Oliver and the Seawigs.

Maths: We will be consolidating and revising our learning on multiplication and division.

Year 4:

English: To complete our Writing through Art project we will be re-searching Kenwood House ahead of our visit after half term.

Maths: We will be continuing to explore Geometry and will be investigating symmetry and classification of shapes.

Year 5

English: We will be editing and publishing their Mexico information guides.

Maths: We will be exploring reading temperature, measurement word problems and perimeter.

Year 6

English: We will be writing a narrative with dialogue from the perspective of Gretl from 'Clockwork'.

Maths: We will be consolidating our understanding of ratio and proportion and the four operations.

School Diary Dates

Full school term dates are on our website.

Educational Visits and Workshops

Wed 24th May—Year 3 RE Workshop

Thurs 25th May—Year 5 Science Museum

Class Assemblies

Tues 23rd May | Blue

Whole School/Ashmount Together Events

Wed 17th May—Year 4 Violin and Year 6 Recorder

Club Concert in the main hall - families welcome to attend.

Thu 18th May—Class child photos

Thu 8th June — Sports Day

Fri 7th July—Bring An Adult To School Day

Parent Workshops

TBC

Cake Sales!

Friday 19th May - Reception

Friday 26th May - Year 4

School Calendar

End of first half summer term Fri 27th May

Our learning in pictures: Nursery -



Our learning in pictures: Reception



Our learning in pictures: Year 1

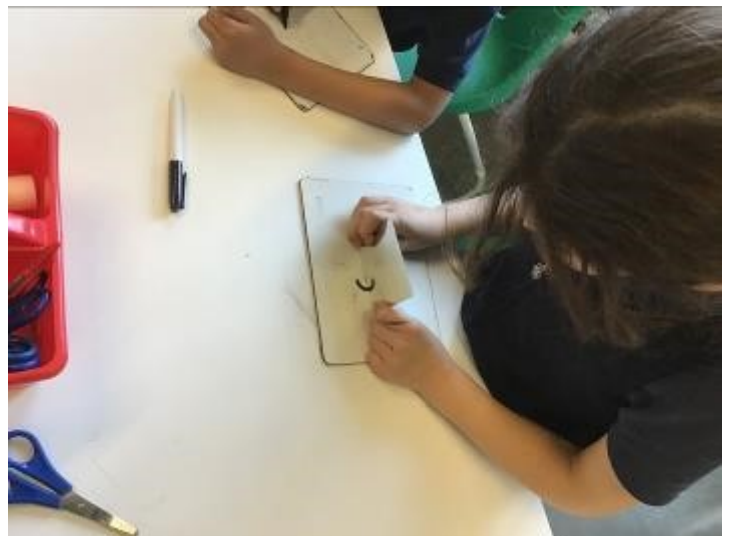
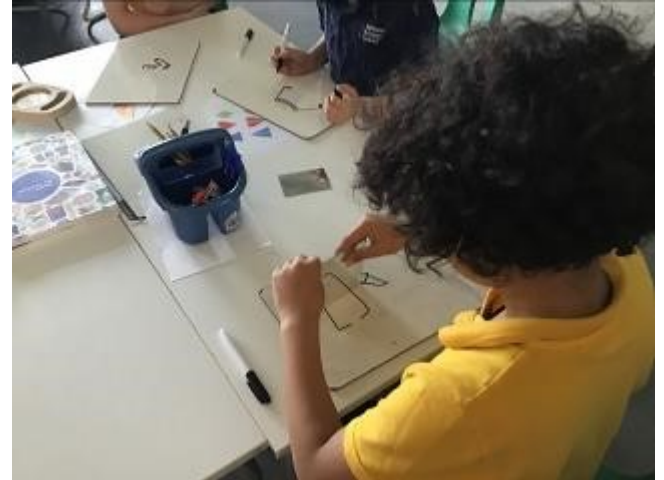


PIC•COLLAGE

Our learning in pictures: Year 2



Our learning in pictures: Year 3



Our learning in pictures Year 4

Our learning in pictures Year 5



Our learning in pictures Year 6

Our post-SATs visit to Hampstead Heath

