

Dear Parents and Carers,

Firstly a reminder that Christmas lunch bookings for Thursday 8th December are now live, apologies for the initial technical glitches with our online payment system early last week!

I would also like to inform you of an update we have received from Public Health this week that they are continuing to see elevated levels of scarlet fever cases particularly in young children. With this in mind they would like to take this opportunity to remind you of the signs, symptoms of Scarlett Fever:

- Scarlet fever is a common childhood infection caused by *Streptococcus pyogenes*, or group A streptococcus (GAS). The early symptoms of scarlet fever include sore throat, headache, fever, nausea and vomiting.
- After 12 to 48 hours the characteristic red, pinhead rash develops, typically first appearing on the chest and stomach, then rapidly spreading to other parts of the body, and giving the skin a sandpaper-like texture.
- The scarlet rash may be harder to spot on darker skin, although the 'sandpaper' feel should be present. Patients typically have flushed cheeks and pallor around the mouth. This may be accompanied by a 'strawberry tongue'. As the child improves peeling of the skin can occur.

<https://www.nhs.uk/conditions/scarlet-fever/>

Next Friday we have our Dress Down for Tombola day. But just to remind families who may be new to us. Children can come dressed in their own clothes on Friday, but in return we would like a donation of a new, or incredibly well looked after item, that we can use for our tombola at the Winter Fair on Friday 2nd December after school.

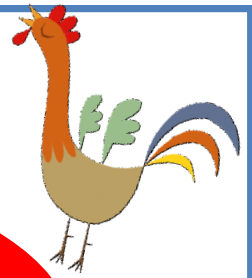
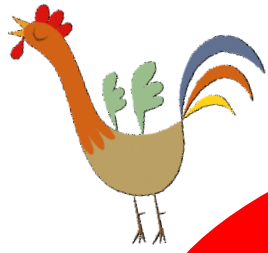
At the winter Fair we also have our annual cake baking competition and this is just a reminder that it would be great to see children from across the school making entries to this annual event. Entries will have to be submitted on the Friday morning at Reception and the outcomes and cakes will be on display at the Winter Fair before being sold to raise monies for the school alongside all of the other fundraising activities at the Winter Fair. These monies are essential for supporting an array of learning activities across the school.

As part of the preparations for the midwinter fair we are asking all children to make snowflakes, which we will decorate the halls with. We are also making these at school, but we are attaching a pdf which explains how you can also make these at home. The more the merrier!

Finally, a reminder that on Tuesday and Wednesday we will have Reception Green's delayed Parents conferences and the following week I Green's.

Best wishes,

Anthony



‘EARLY BIRDS’ BREAKFAST CLUB



Time: 8am - 8.45am



Come to Breakfast and enjoy cereal, toast, seasonal fruits, unsweetened fruit juice, milk etc. and join in the many activities that are available:

Arts and crafts, music, board games, outside play and much more!

After half term *all pupils* are welcome to pick up a bagel outside the main hall when they arrive at school in the morning.

Should you arrive after the start of the school day, pick up a bagel at the school office from 9am — 9.15am



**Ashmount's
Christmas Jumper day
2022**

8th December

**Wear a jumper and donate an item to the
foodbank**



Ashmount Primary School

Community - Responsibility - Growth



Ashmounts Annual Family Christmas Lunch



**Come and celebrate with us on
Thursday 8th December 2022**

Price £5.50, 1 adult per family (must be paid in advance)

Book using teacher 2 parent app or by contacting the school office info@ashmount.islington.sch.uk

Parkland Walk maintenance and upgrade work

Islington Council are planning a project on the Parkland Walk. The project is due to start on the **31st of October** and last around **a month**. The project is to install a soakaway to prevent the pathway from flooding during the winter months and also reinstate the hoggin pathway. They will also be installing a new fence behind the recycling bins on crouch hill. During the fencing works there will be a traffic management plan implemented.

Attached is a picture of the pathway closure and narrow pathway.



Friday 18th November 2022

What we are learning next:

Nursery

English: We be reading the story 'Colour Monster' and learning to talk about our emotions.

Maths: We are learning to recognise circles and triangles in our environment.

Reception

English: We will further exploring 'Billy and the Beast', including hot seating a character, and practising describing characters.

English: Maths: We will be comparing amounts, with a particular focus on identifying equal amounts.

Year 1

English: We will be reading the story 'Dogger' and describing settings from the story.

Maths: We will be learning about positions.

Year 2

English: We will be writing a letter inspired by key text Prita Goes to India.

Maths: We are learning to use division facts for the 2, 5 and 10 times tables.

Year 3:

English: We will be writing in role as a character based on our new text, 'Race To The Frozen North.'

Maths: We will be solving word problems using multiplication and division.

Year 4

English: We will be exploring our new text, 'The Lost Thing'.

Maths: We will be exploring methods of division.

Year 5

English: We will finishing our story, Kensuke's Kingdom, and writing in role of characters.

Maths: We will be learning how to read and interpret tables and line graphs.

Year 6

English: We will be exploring the short film 'The Piano'.

Maths: We will be adding and subtracting fractions and mixed numbers

School Diary Dates

Full school term dates are on our website.

Educational Visits and Workshops

Fri 18th November Y6 at Natural History Museum

Wed 30th Nov—Year 2 Hindu Temple visit

Wed 30th November— 5 Blue at Creekside

Thurs 1st December— 5 Green at Creekside

Whole School Events

Friday 2nd Dec—Winter Fair

Mon 12th Dec—Carol Concert 3:30 p.m.

Cake Sales

Location: KSI playground

18th Nov—Year 5

25 Nov— Year 2

2nd Dec— Year 6 (Winter Fair)

9th Dec—Year 4

School Calendar

2nd Half term starts:

Monday 31st Oct 9 a.m.

End of autumn term:

Friday 16th Dec 2 p.m.

Friday 18th November 2022

Weekly Attendance 14.11.22 — 18.11.22

Class	Percentage
Nursery	86.3%
Reception Blue	96.0%
Reception Green	91.0%
1 Blue	92.4%
1 Green	92.4%
2 Blue	97.5%
2 Green	96.4%
3 Blue	94.3%
3 Green	95.6%
4 Blue	98.1%
4 Green	88.3%
5 Blue	85.7%
5 Green	98.6%
6 Blue	94.3%
6 Green	95.1%

Our best attending classes this week were:

Reception Blue, 2 Blue, 4 Blue and 5 Green

Well done children and adults. The best attending classes at the end of half term will get a Friday film afternoon with hot chocolate and biscuits. At Ashmount, we are aiming for at least 97% attendance in each class. Attendance for all pupils is a huge focus with the mantra being:

"Every minute matters , Every second counts"

If you need support with attendance contact Peter, our School Home Support lead, or Katie and Shajia at the school office.

Times Tables Rock Stars

Congratulations to this week's current league table leaders in each year group! In line with our Growth Mindset philosophy, this charts the biggest improvement in correct scores over the last seven days.

The top 3 most improved children for each year group this week are:

Here are the most improved for each year group:

Y3: Noor, Elicia, Ayaz

Y4: Meriem, Seth, Amelia

Y5: Sammy, Annabel, Amelie

Y6: Adib, Jacob, Sumayo

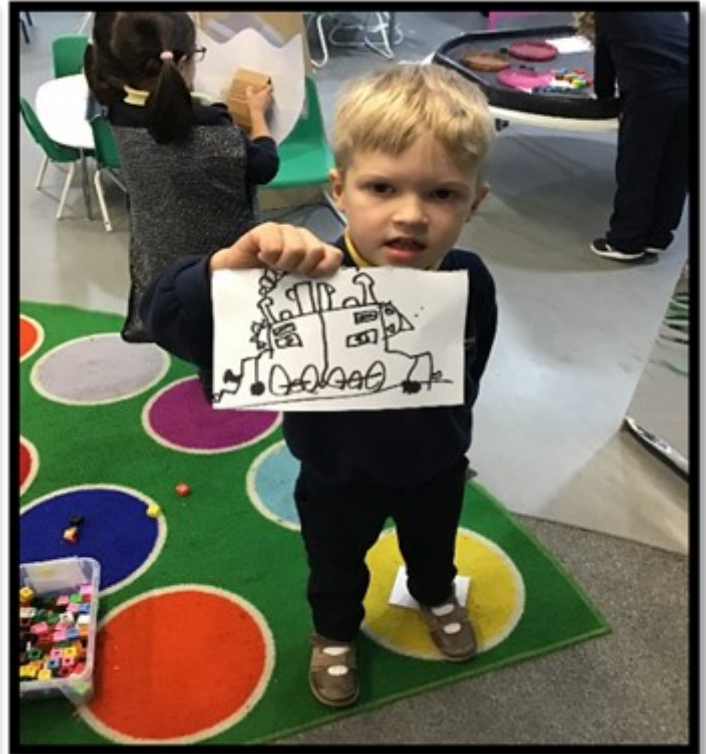


Our learning in pictures: Nursery



Friday 18th November 2022

Our learning in pictures: Reception



Our learning in pictures: Year 1



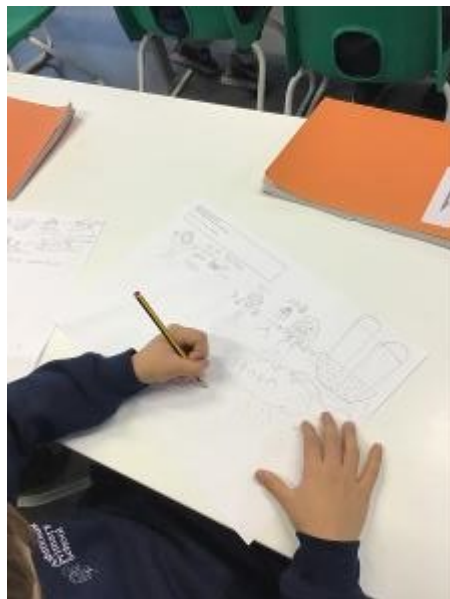
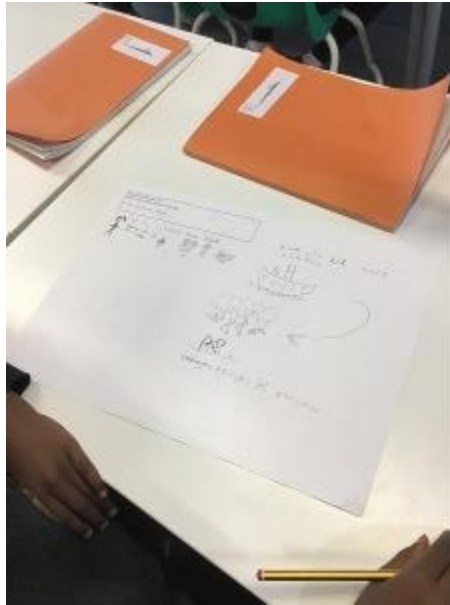
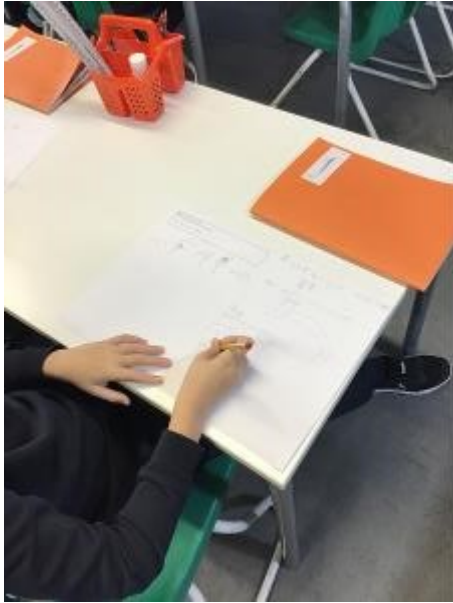
Our learning in pictures: Year 2



Our learning in pictures: Year 3



Our learning in picture Year 4



Friday 18th November 2022

Our learning in pictures: Year 6



PIC•COLLAGE

Our learning in pictures: Year 6

Using drama to perform persuasive speeches

